



Emerald Explorer

7-Day Ireland Tour



Small Group & Self-Drive Ireland Tours



Day 1: Sunday

Clonmacnoise To Connemara

Total driving time: 4 hours, excluding stops

Your Emerald Explorer guided Ireland tour will leave Dublin for the beautiful architecture and natural surroundings of the 6th century monastery at Clonmacnoise, located on the banks of the River Shannon. The monastery was a center of excellence for learning and scholars; it created the finest Celtic art and illuminated manuscripts for over 600 years.

With a whetted appetite, your small group tour will cross the country into County Galway. Your next stop is Kylemore Abbey in the heart of Connemara. The rugged landscape of Connemara, come hail rain or shine, is guaranteed to take your breath away. Spend time roaming the abbey and Victorian walled garden on this 1000-acre estate overlooking Kylemore Lake and the majestic Connemara National Park.

At the end of a busy day, you will settle down for an overnight stay in Clifden – the largest town in Connemara, which is surrounded by the majestic Twelve Bens mountain range. Discover some great bars, restaurants, and live music. Also make sure to have a chat with the locals over a pint of the Black Stuff!

If you feel like treating yourself, we have added the option of staying in Ballynahinch Castle!



Day 2: Monday

The Aran Islands

Total driving time: 1 hour 45 Minutes, excluding stops

After a short drive cross country to Rossaveal Pier on Galway Bay, your small group tour of Ireland will take the ferry to the Aran Islands. We will land on rugged Inishmore, the largest of the three Aran Islands. You will explore the Island by an easy cycle or by special request jaunting.

Your route will take in the stone fort of Dún Aonghasa, which lies 100m over the ocean. Then you will make your way back to the mainland. While you're there, you might pick up a few words of "Gaelic" from the locals and maybe get an original Aran Sweater!

Our departure from Rossaveal is the start of our Galway adventure. We will hug the coastline into bustling bohemian Galway. Expect a great atmosphere, entertaining street performers and plenty of craic in this much-celebrated town.

Day 3: Tuesday

Galway To Cliffs Of Moher

Total driving time: 1.5 hours, excluding stops

Galway is one of Ireland's great cities, and it has its Medieval history at its very heart.

After getting an initial "feel" for Galway, your guide will take you down the narrow medieval streets where you can duck in and out of brightly coloured shops.

Try on Claddagh Rings, Galway shawls, and pass through The Spanish Arch to take in the famous Claddagh fishing village.

This day just keeps on giving. We will now travel south west towards The Burren National Park and the jaw dropping Cliffs of Moher. On this adventure you will visit Corcomroe Abbey, a 13th century Cistercian Monastery, and the 16th century Dunguaire Castle in the fishing village of Kinvara.





Day 4: Wednesday

Doolin To Dingle

Total driving time: 3 hours 30 minutes, excluding stops

A trip to Ireland is not complete without seeing all the ancient structures. We will bring you to the most famous Dolmens at Poul nabrone. These Neolithic monuments are scattered throughout the country marking burial sites and passageways dating back to 3000 BC.

A short journey from the Dolmen, the farmers at Caherconnell will treat you to a spectacular sheep dog trial. Prepare to be awestruck by the skill of the farmers' furry friends as they gather up their flock of sheep. This is something not to be missed on your tour.

We will leave the west behind for the spectacular southern counties of Kerry and Cork. Next stop is Dingle.

This evening is yours to absorb the atmosphere in Dingle's famous quirky pubs and fantastic restaurants. Why not sit in Foxy John's hardware store, order yourself a drink, and strike up a conversation with a colorful local!

Day 5: Thursday

Dingle Peninsula

Total driving time: 2 hours 30 minutes, excluding stops

Our morning begins on Dingle Bay where we take our kayaks out onto the water to explore the caves in the bay. Alternatively, if kayaking isn't your thing, we will take you on a hike up Mount Brandon where you will be rewarded with 360-degree panoramic views of Dingle Bay and Castlegregory. If you would like a more relaxed start to your day, why not choose a stroll around the town for some retail therapy and a proper cup of coffee as you watch the world go by. It's your holiday – do it your way.

After lunch, your expert Overland guide will take you on an impressive trip along one of Ireland's most scenic roads – The Sleat Head Drive. If you are lucky enough, you might get to meet a couple of our local fluffy friends... Depending on the time of year, there are loads of baby lambs in this corner of the Emerald Isle!

You will spend another night in the buzzing town of Dingle, so you don't need to repack your suitcase. Just relax and enjoy.



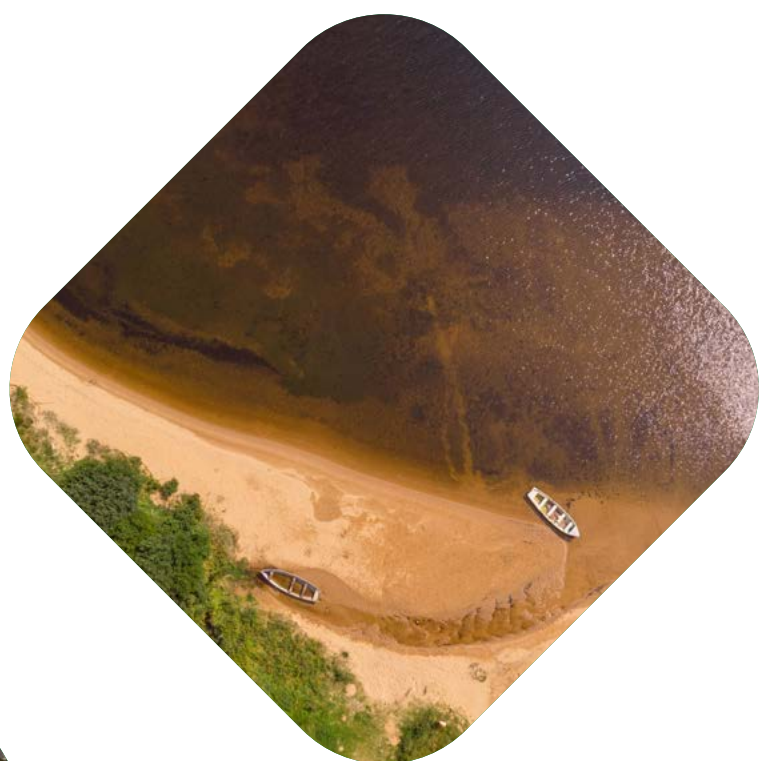
Day 6: Friday

The Ring Of Kerry To Kinsale

Total driving time: 3 hours 30 minutes, excluding stops

Say a fond farewell to Dingle and journey towards the Ring of Kerry. Our first stop takes us to Killarney on the Ring of Kerry. The Ring of Kerry is the very definition of the word scenic, and you will discover many hidden gems including Moll's Gap, Torc Waterfall, and Ross Castle in Killarney National Park. We will bring you on a tour of Ross Castle; here you will learn what life was really like behind the stone walls.

We will stop for some shopping and lunch in the beautiful heritage town of Kenmare. For your last night on tour, we will bring you to coastal Kinsale — a stunning town famed for its culinary culture, with many award-winning restaurants. The town also has a great tradition of poetry, silver, gold, and glassware manufacturing which can be seen throughout its local shops and galleries.





Day 7: Saturday

Kiss The Blarney Stone

Total driving time: 3 hours 30 minutes

Wake up refreshed and ready to be taken on a guided walking tour through the narrow streets of Kinsale. Before leaving Cork – which is often referred to as Ireland’s REAL capital – we will bring you to Blarney Castle. Nobody should leave Ireland without giving the Blarney stone a big fat kiss! Kissing the Blarney Stone is said to give the kisser the treasured “gift of the gab”. You can let us know if it works!

Our final stop is the Rock of Cashel. The Rock of Cashel is over 1000 years old. You will take in its medieval round tower, chapel, cathedral, and castle. A truly fantastic end to your trip.

Our guides will journey back with you to our bustling capital city, Dublin, where you’ll be armed with recommendations of things to see and do if you have a little time left. Perhaps this is just the perfect opportunity to sit back and reminisce about the incredible tour of Ireland you’ve just experienced!

Getting in the Mood for your Trip

Any other questions?

Now it's time to get yourself in the mood and really excited for your trip!

Come join the chat in our fun [Facebook group](#), where you can ask questions, share your own tips, or just generally share your love for all things Ireland.

Also take a look through our [Instagram photos](#) for inspiration and check out our [blog posts](#) for lots more insights!

Hope to see you soon,
- Team Overland

Phone: [00353-91-376482](tel:00353-91-376482)

WhatsApp: [00353-86-2463358](tel:00353-86-2463358)

overlandirelandtours.com



Phone: 00353-91-376482

WhatsApp: 00353-86-2463358

overlandirelandtours.com